

CONCRETE AND REINFORCING STEEL QUANTITIES																				
LENGTH (FT.)	CONCRETE (CU. YDS.)	S-5-a		S-5-b		S-5-c		S-5-d		S-5-e		S-5-f		H-5-a		V-5-a		V-5-b		WEIGHT LBS.
		NO.	LIN. FT.	NO.	LIN. FT.	NO.	LIN. FT.	NO.	LIN. FT.	NO.	LIN. FT.	NO.	LIN. FT.	NO.	LIN. FT.	NO.	LIN. FT.	NO.	LIN. FT.	
6	3.8	10	6'-3"	4	5'-6"	3	4'-4"	7	7'-0"	4	3'-8"	6	3'-0"	8	3'-8"	4	2'-6"	10	1'-0"	238
8	4.6	18	6'-3"	4	5'-6"	3	6'-4"	7	9'-0"	4	3'-8"	6	3'-0"	8	5'-8"	4	2'-6"	14	1'-0"	332
10	5.4	26	6'-3"	4	5'-6"	3	8'-4"	7	11'-0"	4	3'-8"	6	3'-0"	8	7'-8"	4	2'-6"	18	1'-0"	426
12	6.2	34	6'-3"	4	5'-6"	3	10'-4"	7	13'-0"	4	3'-8"	6	3'-0"	8	9'-8"	4	2'-6"	22	1'-0"	520
14	7.0	42	6'-3"	4	5'-6"	3	12'-4"	7	15'-0"	4	3'-8"	6	3'-0"	8	11'-8"	4	2'-6"	26	1'-0"	614
16	7.8	50	6'-3"	4	5'-6"	3	14'-4"	7	17'-0"	4	3'-8"	6	3'-0"	8	13'-8"	4	2'-6"	30	1'-0"	708
18	8.6	58	6'-3"	4	5'-6"	3	16'-4"	7	19'-0"	4	3'-8"	6	3'-0"	8	15'-8"	4	2'-6"	34	1'-0"	802
20	9.4	66	6'-3"	4	5'-6"	3	18'-4"	7	21'-0"	4	3'-8"	6	3'-0"	8	17'-8"	4	2'-6"	38	1'-0"	895

NOTES

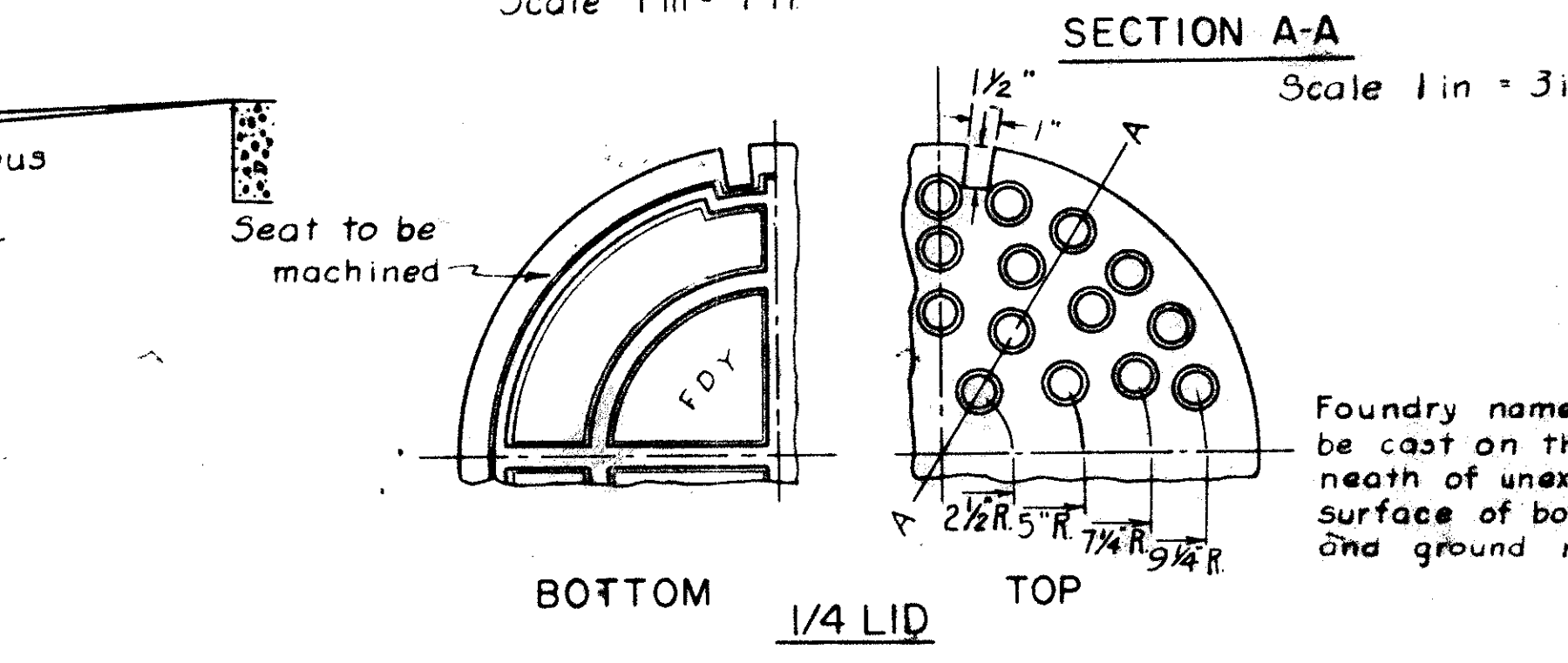
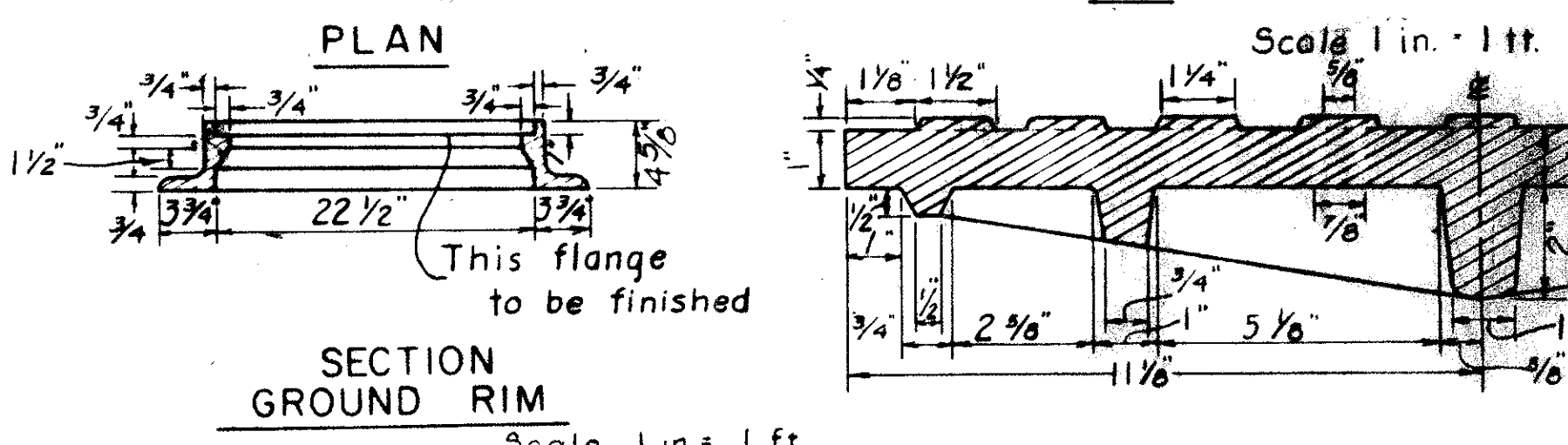
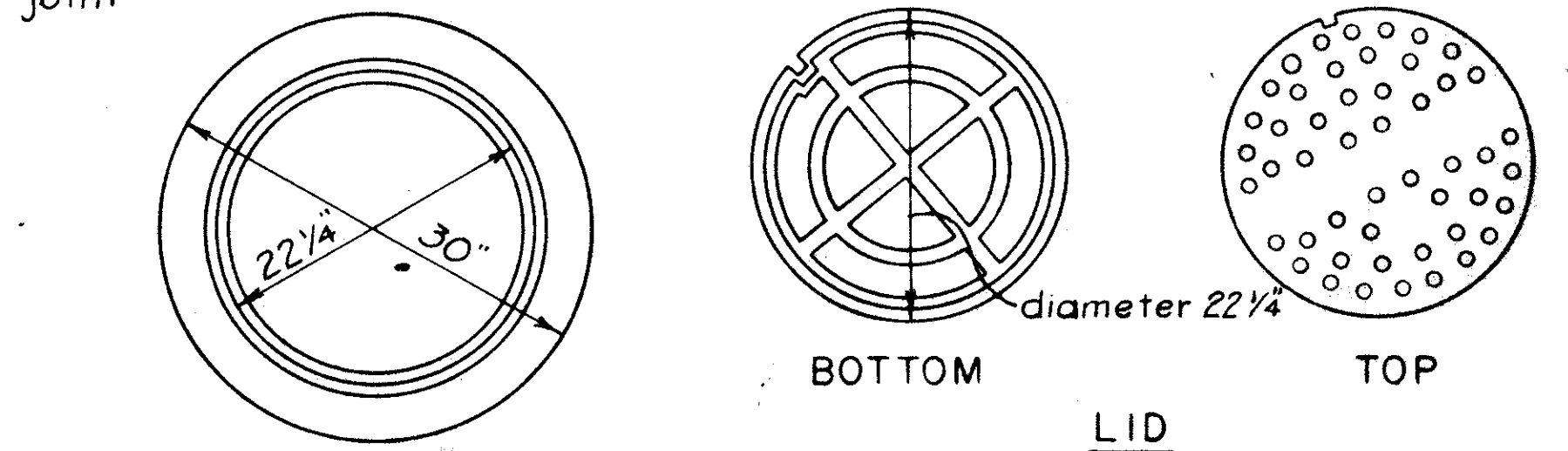
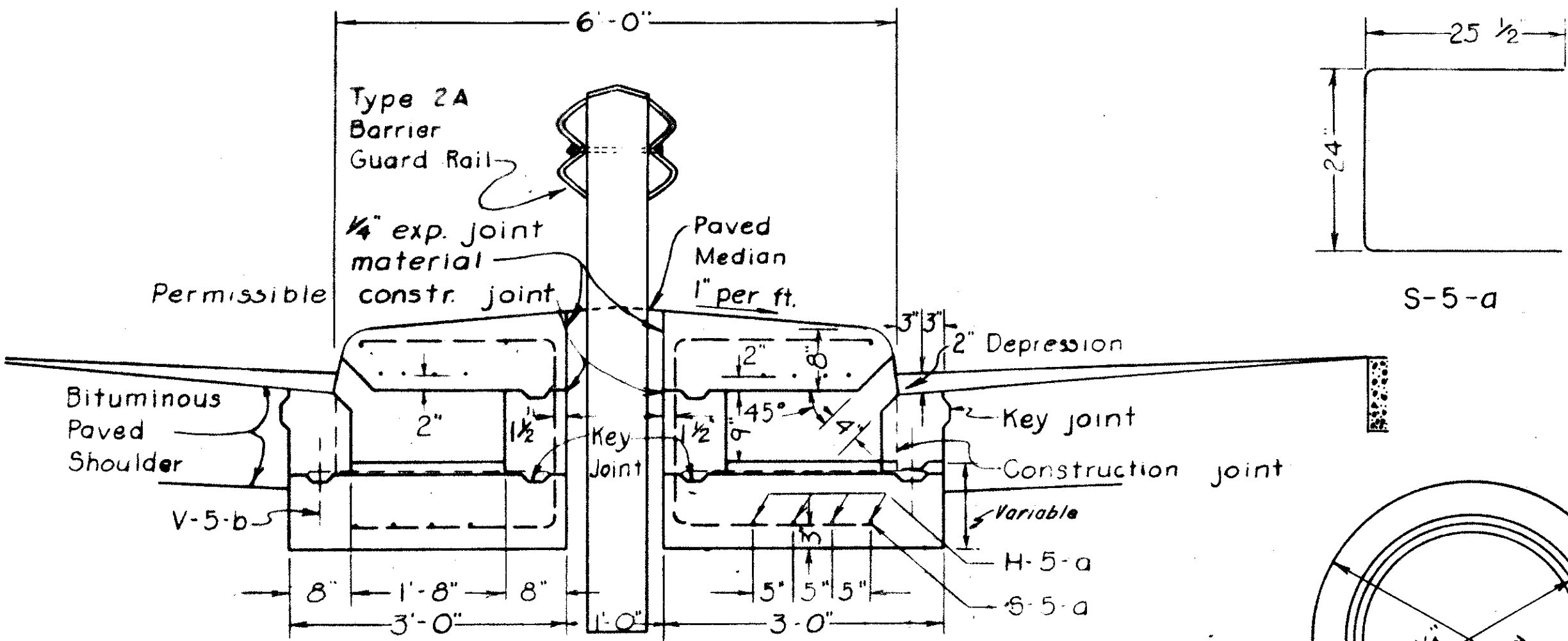
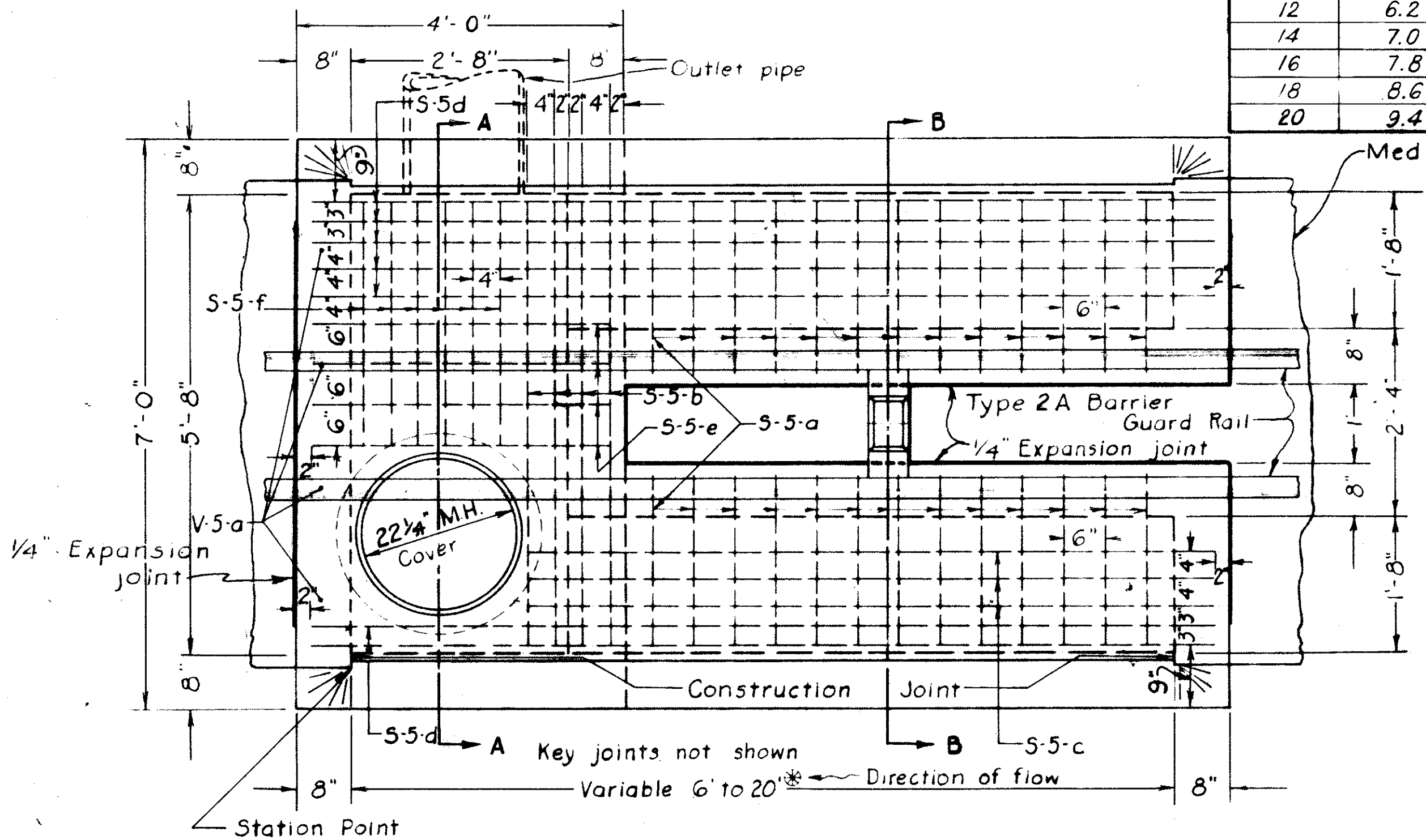
Castings shall be of cast iron in accordance with Material Details. The design shall be essentially the same and equally as strong as those shown hereon and shall be given one coat of asphaltum paint as per specifications.

Bearing areas of frame and cover shall be so fitted and finished as to provide a firm and even seat for the entire cover in the frame. No projections shall exist on bearing areas of either casting and the cover shall seat in its frame without rocking.

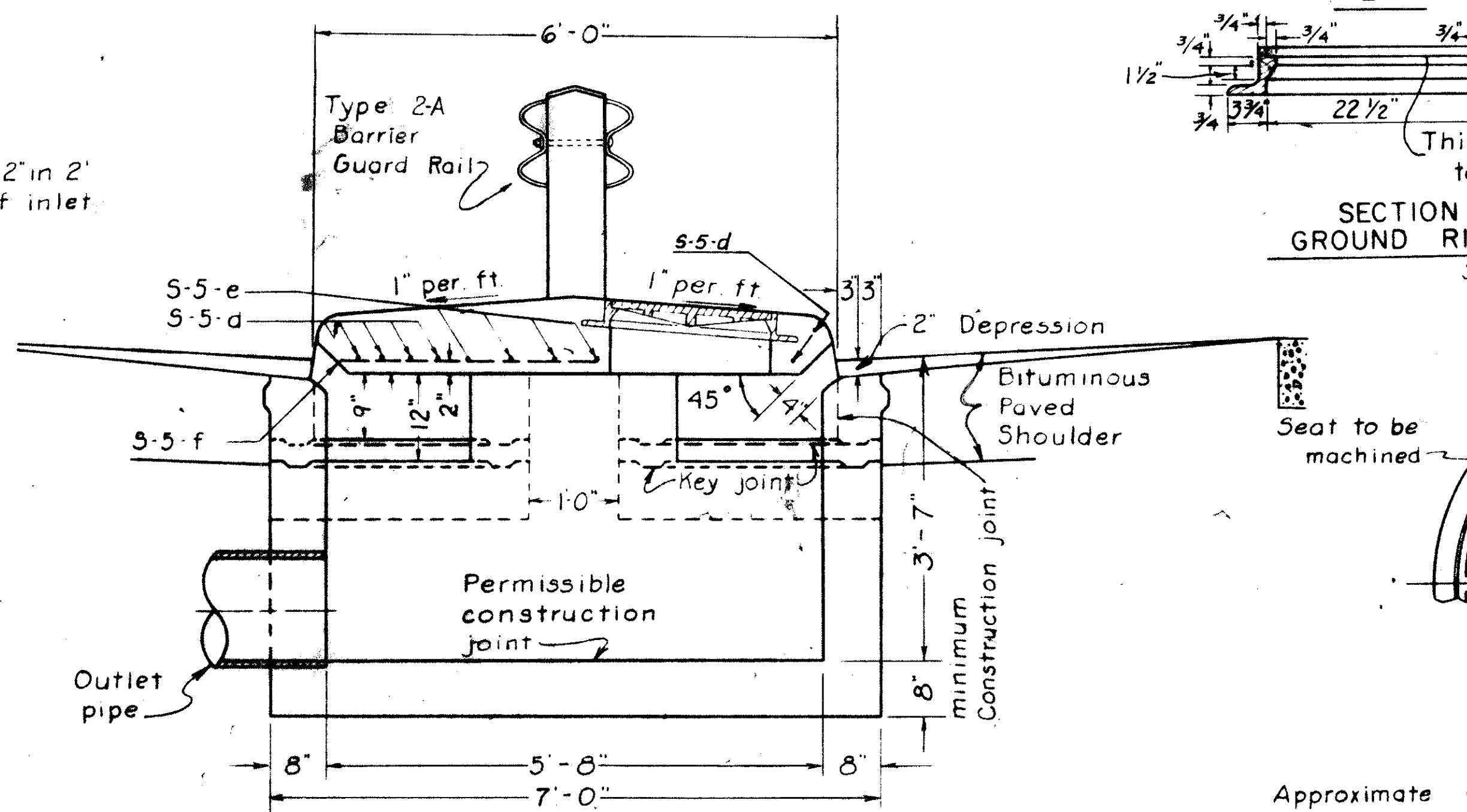
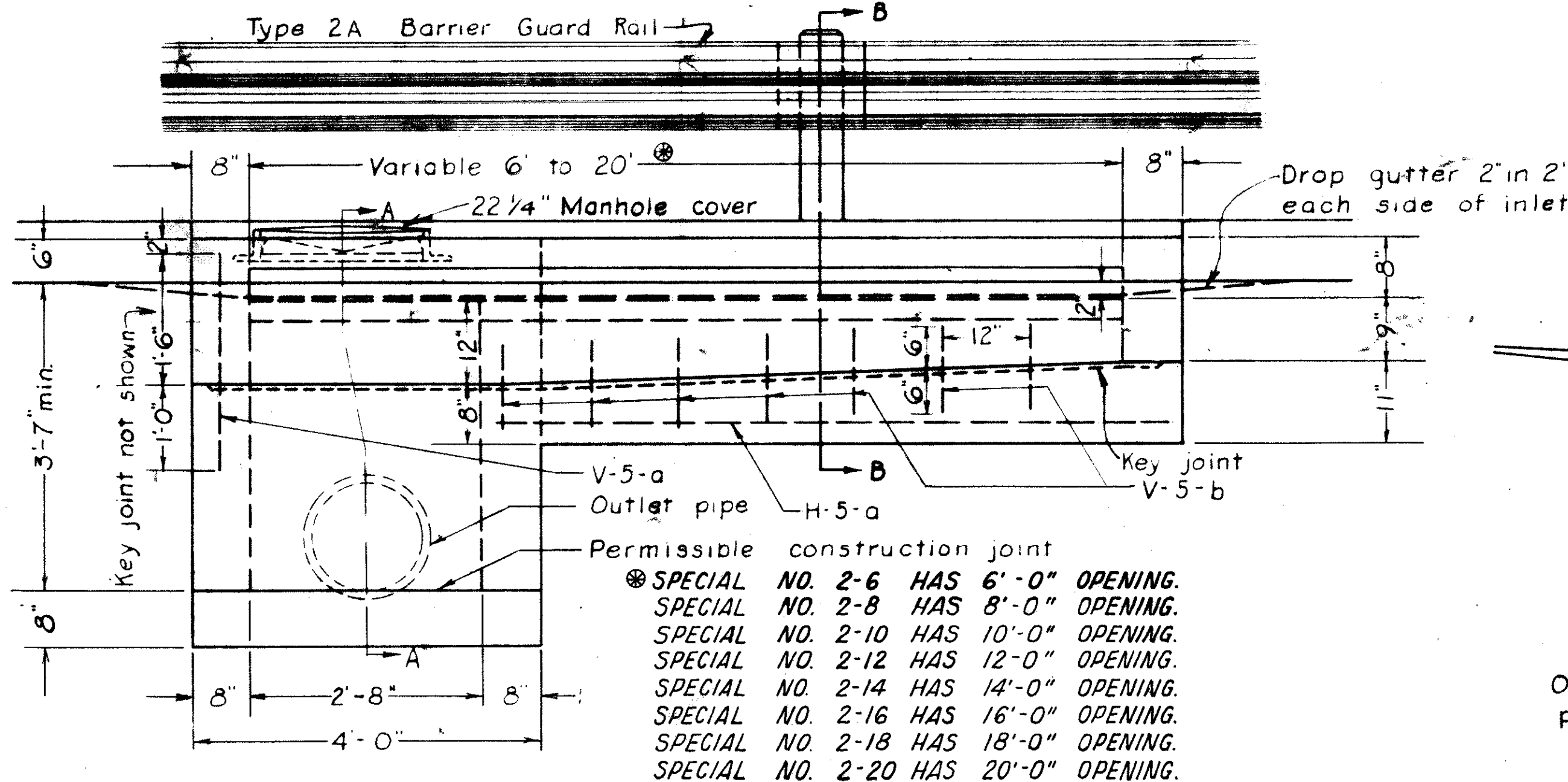
Minimum weight of frame and cover 262 lbs.

Reinforcing steel shall be 5/8" round bars in accordance with steel details shown hereon and conforming to Item S-4 of the Construction Materials Specifications. Cost of furnishing and placing reinforcing steel shall be included in Item I-8 for payment. Concrete shall be class "C".

Quantities of curb, pavement and median pavement within the limits of the inlet shall be deducted from the project quantities.



Approximate weight of frame and cover for inlet = 262 lbs.



STANDARD NO. 2-6 TO 2-20 INLETS AS PER PLAN
FOR USE IN MEDIAN